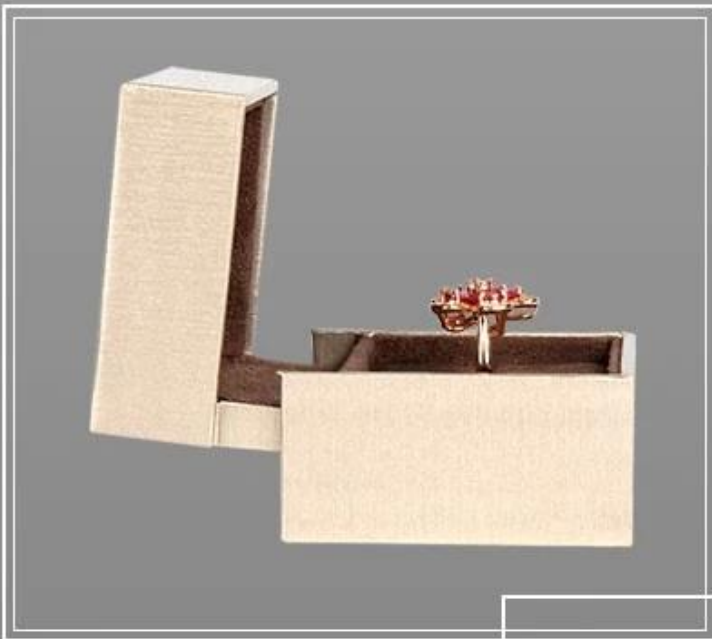


gold jewelry box flapped open wood with custom logo printed

product display

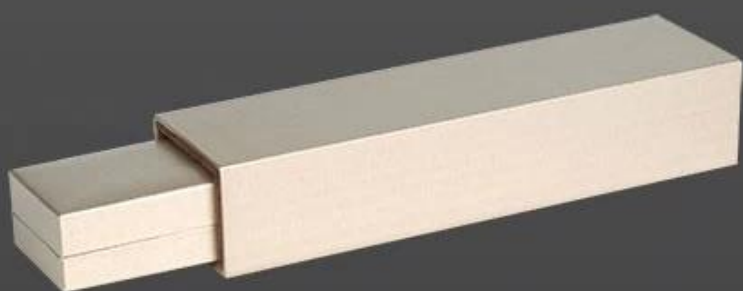


This series of boxes design highlights is staggered hinge.

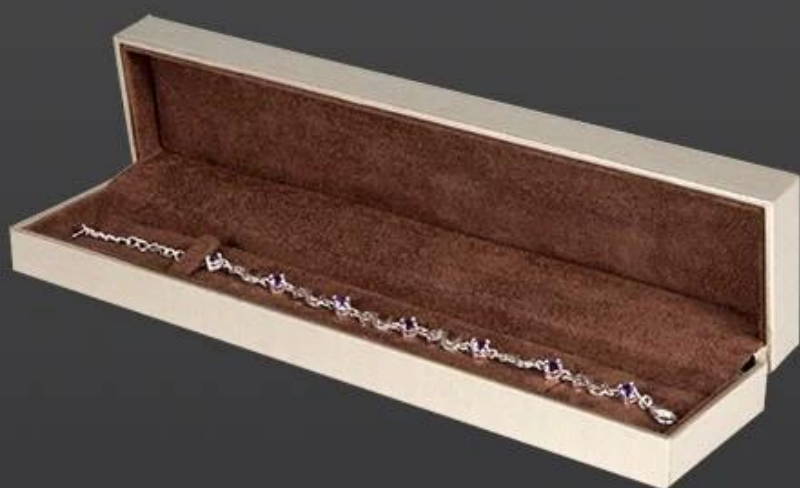


ring box

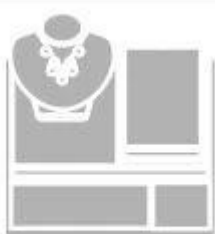




bracelet box



Other products you may interested in:



Jewelry display set



Necklace stand



Jewelry display stand



Jewelry paper bag



Jewelry pouch



Jewelry Roll bag



Jewelry Tray



Jewelry Box



Jewelry Mirror

Environment



Production process:

Production Process



Polishing



Cutting



Materials



Assembling



Painting



Gluing



Packing



QC



Wrapping

Packaging & Delivery



Shipping



Certificates:





Cooperation partner:



FAQ

Q1. What's your product range?

1. Jewelry Display Stand---Earring/Necklace/Pendant/Bracelet/Bangle/Ring display holder
2. Jewelry Trays
3. Jewelry Display Sets
4. Jewelry Boxes---Paper Box/Plastic Box/Wooden Box/Velvet Box
5. Packaging---Jewelry Pouches/ Paper Gift Bags

Q2. Are you a direct manufacturer?

Yes. We have been specialized in jewelry displays and packaging for over 10 years since 2003.

Q3. Do you have stock items to sell?

No. We do customize. That means all details---size, material, color, quantity, design, logo--- will be finished follow your ideas.

Q4. Do you inspect the finished products?

Yes. Each step of production and finished products will be carried out inspection by QC department before

shipping.

We are always ready to be your loyal guider for jewelry displays!

Send your Inquiry now!

Best solutions&high quality items will be offered. *^_^*

Contact:

Overseas sales hotline:+86 0755-25861273 0755-25534056

E-mail:sales22@bzshow.net