

Yadao wholesale jewelry velvet pouch with draw string closure jewelry packaging pouch

Product discription:

product name	drawstring jewelry pouch
Material	Velvet
Size	Customized
Color	Customized
MOQ	1000 pcs
Logo	It can be printed as your design
Sample	Available
OEM / ODM	Offer
Place of origin	Guangdong, China (mainland)

Product details:





Other products that may interest you:



Jewelry display set



Necklace stand



Jewelry display stand



Jewelry paper bag



Jewelry pouch



Jewelry Roll bag



Jewelry Tray

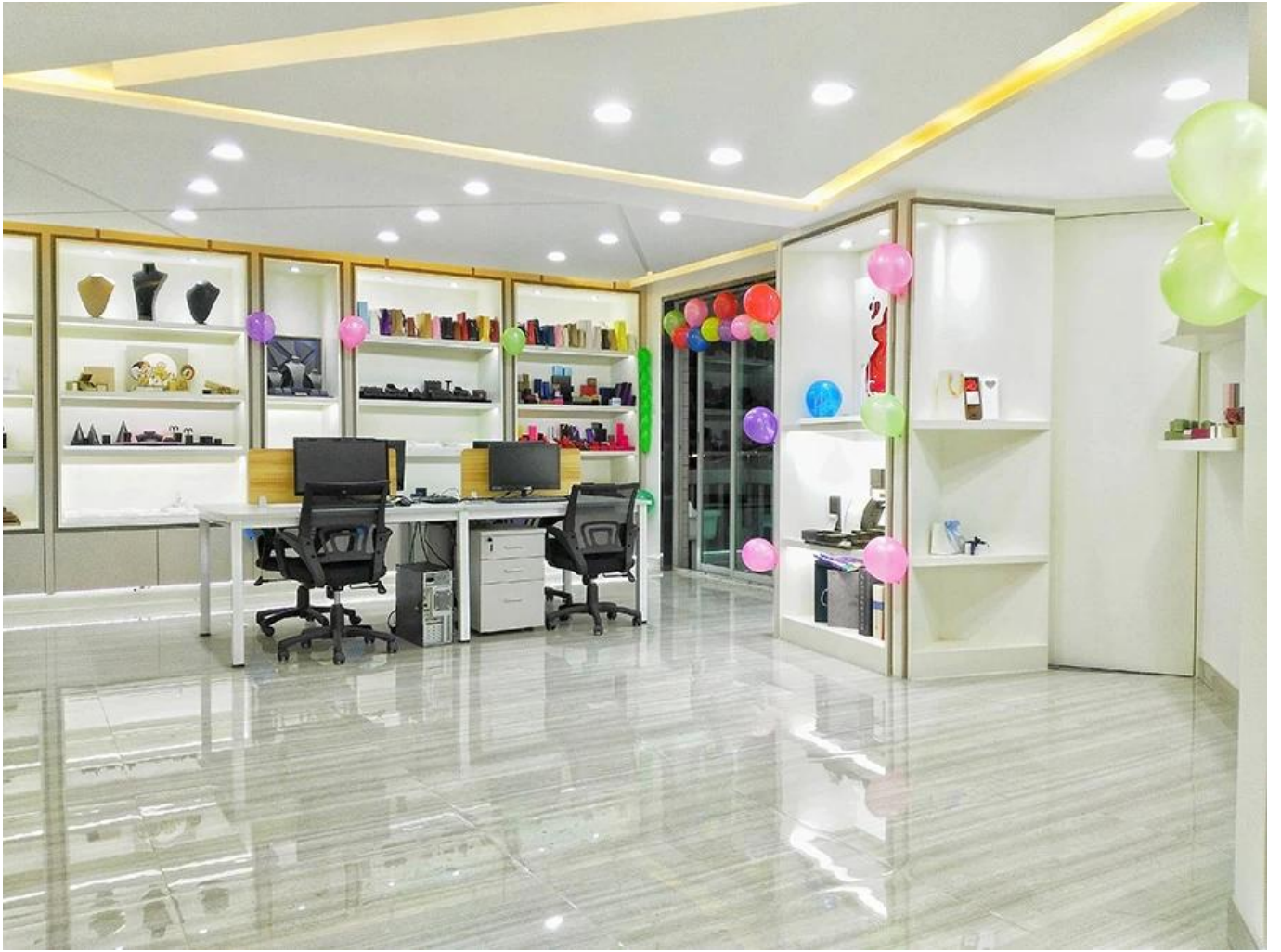


Jewelry Box



Jewelry Mirror

Environment:



Our exhibition □

2019 Hongkong international jewellery show



2018 Hongkong international jewellery show



2017 Hongkong international jewellery show



Visiting customer:



Productive process:

Production Process



Polishing



Cutting



Materials



Assembling



Painting



Gluing



Packing



QC



Wrapping

Box production process



Packaging and delivery □



Shipment:



certificate:



Cooperation partners:



FAQ

Q1. What is your product range?

1. Jewelry display --- Earrings / necklace / pendant / bracelet / bracelet / display stand
2. Trays for jewelry
3. Jewelry set
4. jewelry box --- paper box / plastic box / wooden box / velvet box
5. Packaging --- Jewelry bags / Paper gift bags

Q2. Are you a direct manufacturer?

Yes. Since 2003 we have been specializing in jewelry and packaging displays for over 10 years.

Q3. Do you have items in stock to sell?

No. We customize. This means that all the details --- size, material, color, quantity, design, logo --- will be finished following your ideas.

Q4. Do you inspect the finished products?

Yes. Each phase of production and finished products will be carried out by the quality control department

before shipment.

We are always ready to be your loyal driver for jewelry displays!

Send your request now!

The best solutions and high quality items will be offered. * ^ _ ^ *

Contact:

Foreign sales hotline: +86 0755-25861273 0755-25534056

E-mail: sales@bzshow.net