

Wholesale custom logo MDF wrapped with blue PU leather bangle displays for shop window and counter exhibitor bracelet showcase holder

Pictures of Wholesale custom logo MDF wrapped with blue PU leather bangle displays for shop window and counter exhibitor bracelet showcase holder





YADAO
JEWELLERY PACKAGING

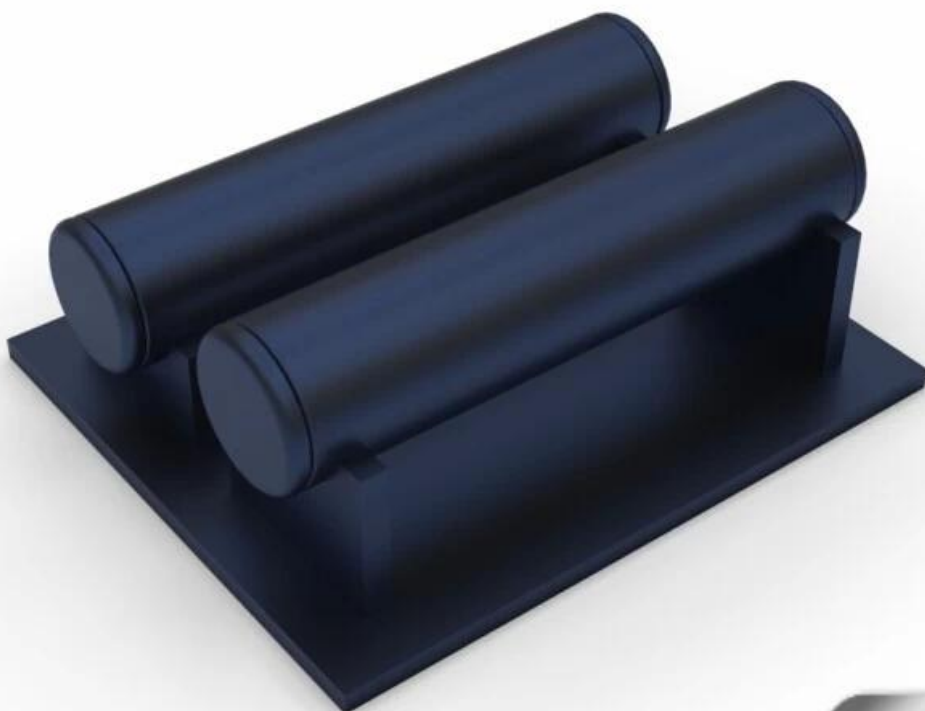


www.jewelsdisplay.com





YADAO
JEWELLERY PACKAGING



www.jewelsdisplay.com





YADAO
JEWELLERY PACKAGING



www.jewelsdisplay.com

NEW

Other products you may interested in:



Jewelry display



necklace stand



Jewelry pouch



Jewelry Display Stands



Jewelry Trays



Jewelry Boxes

Environment



Production process:

Production Process



Packaging & Delivery



Shipping



Certificates:





FAQ

Q1. What's your product range?

1. Jewelry Display Stand---Earring/Necklace/Pendant/Bracelet/Bangle/Ring display holder
2. Jewelry Trays
3. Jewelry Display Sets
4. Jewelry Boxes---Paper Box/Plastic Box/Wooden Box/Velvet Box
5. Packaging---Jewelry Pouches/ Paper Gift Bags

Q2. Are you a direct manufacturer?

Yes. We have been specialized in jewelry displays and packaging for over 10 years since 2003.

Q3. Do you have stock items to sell?

No. We do customize. That means all details---size, material, color, quantity, design, logo--- will be finished follow your ideas.

Q4. Do you inspect the finished products?

Yes. Each step of production and finished products will be carried out inspection by QC department before shipping.

We are always ready to be your excellent packaging supplier!

Send your Inquiry now! We will reply to you within one day. :-)

Contact:

Overseas sales hotline:+86 0755-25861273 0755-25534056
E-mail:sales@bzshow.net