

# Custom Luxurious Black Wearable Fabric Jewelry Pouch with Flap

[24 hours of service click here to contact us at once.](#)

## Product Description :

Product Name	Custom Luxurious Black Wearable Fabric Jewelry Pouch with Flap
Material	Ice Velvet, Long/Medium/Short Plush, Microfiber, PU Leather, granular velvet
Size	Will be according to clients' requests
Color	Black and Blue (Customized Color)
MOQ	2000 PCS
Logo	Embossing, Deboss, Stamping, Silk printing, Metal sticker, Varnishing, Glossy Lamination, Matt Lamination
OEM/ODM	Available
Speciality	Handmade, Recycled, High Quality
Closure Design	Drawstring, Snap button, Zipper, Sticker, Magnetic
Packing	According to Custom Made
Sample time	5-7 Days with Logo , 1-3 Days without Logo
Mass Production	20-30 Days
Shipment	Express , Boat , air freight
Production Process	Cutting, Grinding, Polishing, Laser Engraving, Sandblast, Hot-Bend Forming, Sticking, Cleaning., Packing.
Application	Promotional, Shopping, Gift, Advertising, Packaging
Payment	T/T, Paypal, Western Union, L/C, Trade Assurance

## PRODUCTION DESCRIPTION:





Princess Jewelry





**Logo Crafts :**

# logo crafts



embossed



hot stamping



metal logo plate



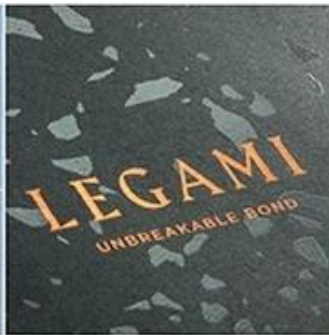
silk printing



metal logo sticker



embossed



uv



hologram hot-stamping

Other products you may be interested in:



Shenzhen Yadao Packaging Design Co.,Ltd

More choices



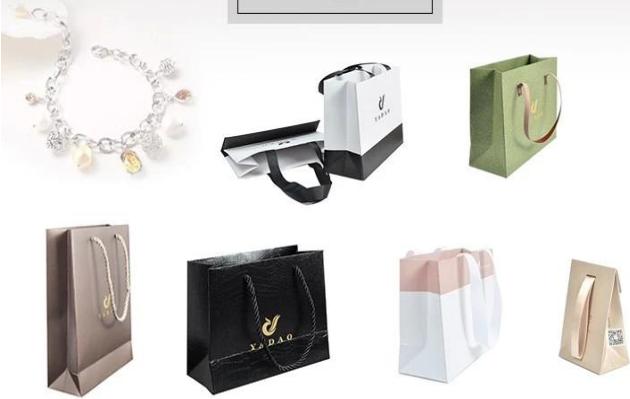
Shenzhen Yadao Packaging Design Co.,Ltd

More choices

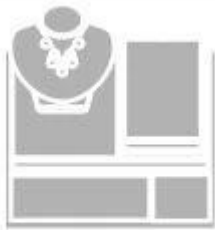


Shenzhen Yadao Packaging Design Co.,Ltd

More choices



## HOT PRODUCTS:



Jewelry display set



Necklace stand



Jewelry display stand



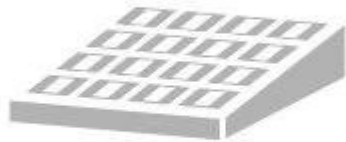
Jewelry paper bag



Jewelry pouch



Jewelry Roll bag



Jewelry Tray



Jewelry Box



Jewelry Mirror

**COMPANY PROFILE:**



# Yadao Headquarter





**OUR SHOW:**



2018 Hongkong international jewellery show



2018 Hongkong international jewellery show



**CERTIFICATE:**



**COOPERATIVE BRAND:**



## FAQ:

Q1: Do you accept custom boxes/products in my own logo and design printing?

R1: Yes. As a factory, most of our products are customized, It will be great if you can send us artworks. However, if you just have an idea, please don't worry, our experienced design team will also be glad to work it out until satisfied you.

Q2: Can you produce according to customers' design?

R2: Of course, we are professional manufacturer we has our own supporting mold center, and we always ready to provide customers with supporting services and personalized service at anytime. What you need to do is provide us with the sample or accurate design drawing.

Q3: What is the minimum order quantity(MOQ)?

R3: Different product with different minimum order, so please contact with us before you place the order.

Q4: How can I get some samples?

R4:We are honored to offer you samples for free, but the new clients are expected to pay the courier cost. Regarding the courier cost, you can arrange a RPI(remote pick-up) service upon FEDEX, UPS, DHL, etc to have samples collected; or inform us your courier account.

Q5:What is the payment method ?

R5:Our payment is in many ways, like T/T, L/C,Western union and so on.

Q6:What are shipping method and time?

R6:Express courier like DHL, TNT, FEDEX, UPS, EMS etc, shipping time is about 2 weeks depends on country and area.

By air port to port: about 7-12days depends on port

By sea port to port: about 20-35days.

Agent appointed by clients

## **CONTACT US:**

**Contact: Nora Chen**

**Shenzhen Yadao Packaging Design Co.,Ltd**

**Sales manger**

**Room #509,Dahua Business Center,No. 269 Baogang Road,Luohu District,Shenzhen City,Guangdong Province,China.**

**Tel: +86-755-25861273**

**Fax: +86-0755-25534056**